



MALLORCA

REAL ESTATE

SINCE 2005



Ref.:MF2120

Penthouse with perfect location and amazing views in Portixol

This is a big penthouse with a perfect location by the sea in the upcoming and popular area of Portixol, close to Palma city and the airport. It is an area that has all kinds of services, with public transport, near the city center and with direct access to the highway. The apartment has breathtaking views of the port, the bay of Palma, the city of Palma. It is in need of refurbishment.

The total living area is 162 m2 and consists of 2 living rooms, both with direct access to the private terrace of approximately 30 m2, a kitchen, 3 bedrooms and 2 bathrooms. The penthouse has two separate entrance doors and there is also a laundry and storage room. This is an apartment in a top location with great potential to become your dream apartment.

Additional information: Air conditioning, elevator, sea views, storage room and private terrace.

Portixol - El Molinar	yes	no
3	2	no
162 m2 + 30 m2	1.696.800	yes





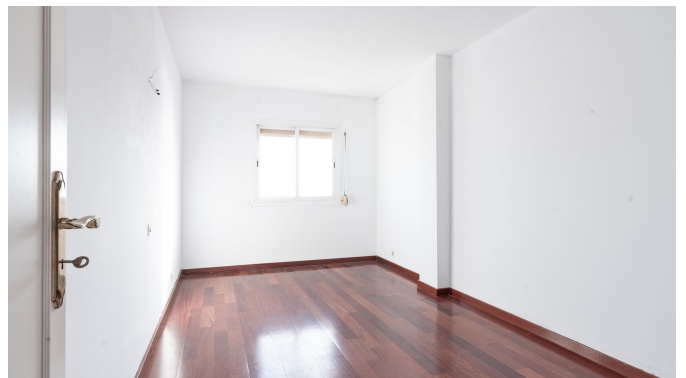
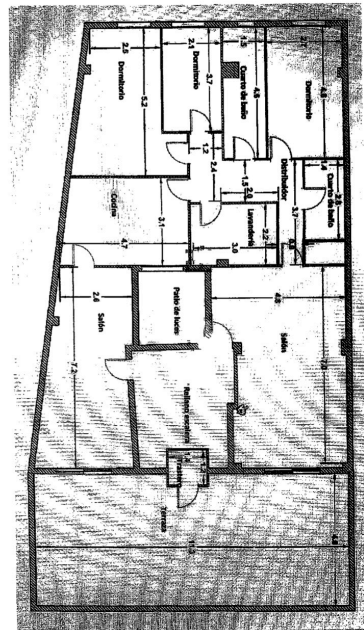
MALLORCA

REAL ESTATE

SINCE 2005

Ref.: MF2120

Penthouse with perfect location and amazing views in Portixol



www.bo-mallorca.com/en

Calle Aníbal 23D bajos - Santa Catalina - 07013 Palma - Tel: +34 971 22 08 68 - info@bo-mallorca.com



MALLORCA

REAL ESTATE

SINCE 2005

