



MALLORCA

REAL ESTATE

SINCE 2005






Ref.:MF2466

Ground floor with garden in the center of Palma

This ground floor house with a large garden is located by S'Escorxador at the end of the lively pedestrian street Blanquerna. It is one of the few traditional single family homes left in the area. The house has a total living area of 90 m2 plus a 60 m2 roof terrace all set on a plot of 200 m2. Currently the house consists of a living area, kitchen, 2 bedrooms and a bathroom. From the living room and kitchen you have direct access to a large garden with several storage units that can be used as a shed or an extra room. A staircase leads to a very sunny roof terrace of about 60 m2.

The property needs complete renovation. There is also a possibility of turning one of the rooms into a parking and building 3 more floors or 4 separate apartments of approximately 65 m2 each.

Additional information: private terrace and garden.

 Blanquerna	 200 m2	 no
 2	 1	 no
 94 m2 +  100 m2	 340.000	 no





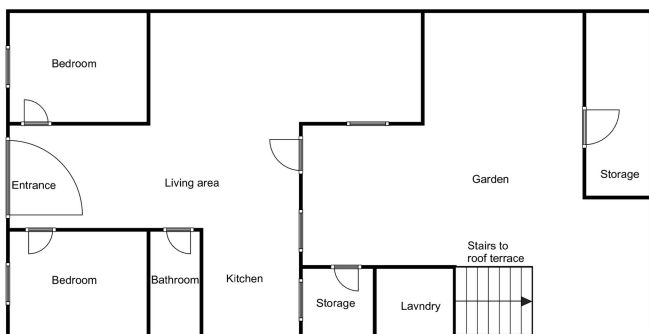
MALLORCA

REAL ESTATE

SINCE 2005

Ref.: MF2466

Ground floor with garden in the center of Palma



www.bo-mallorca.com/en

Calle Aníbal 23D bajos - Santa Catalina - 07013 Palma - Tel: +34 971 22 08 68 - info@bo-mallorca.com