



MALLORCA

REAL ESTATE

SINCE 2005



Ref.:PS04050

### Duplex apartment with sea views in Portixol

This duplex apartment in the popular Portixol area is expected to be fully completed by June 2026. You'll be just a minute away from the beach, the promenade, and the neighborhood's charming restaurants and cafés.

The residence is bright and modern, with a living area of 108 m<sup>2</sup> spread over two floors. On the lower level, you'll find a spacious bedroom with an en-suite bathroom, as well as an additional large room that could serve as a bedroom, office, or guest room. On the upper level, you'll find your designer kitchen with high-quality appliances, open to the living room. From here, you also access the first of your two terraces, measuring 33 m<sup>2</sup>.

Directly connected from this terrace is your private rooftop terrace of 41 m<sup>2</sup>, offering stunning sea views and plenty of space for lounge furniture, dining, and a barbecue. It's a fantastic space to enjoy warm evenings with friends and family.

Portixol - El Molinar	yes	no
2	2	no
108 m <sup>2</sup> +  74 m <sup>2</sup>	1.190.000	yes





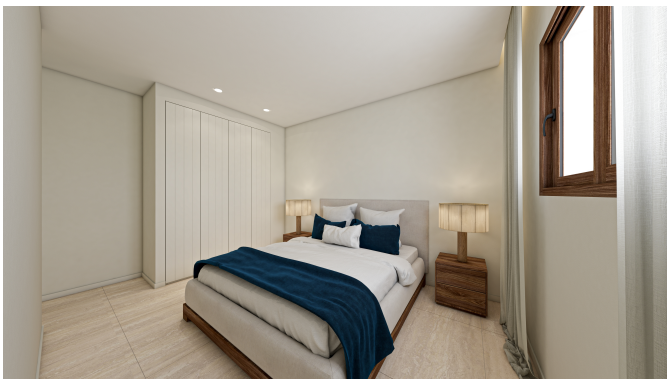
MALLORCA

REAL ESTATE

SINCE 2005

Ref.: PS04050

Duplex apartment with sea views in Portixol





MALLORCA

REAL ESTATE

SINCE 2005

